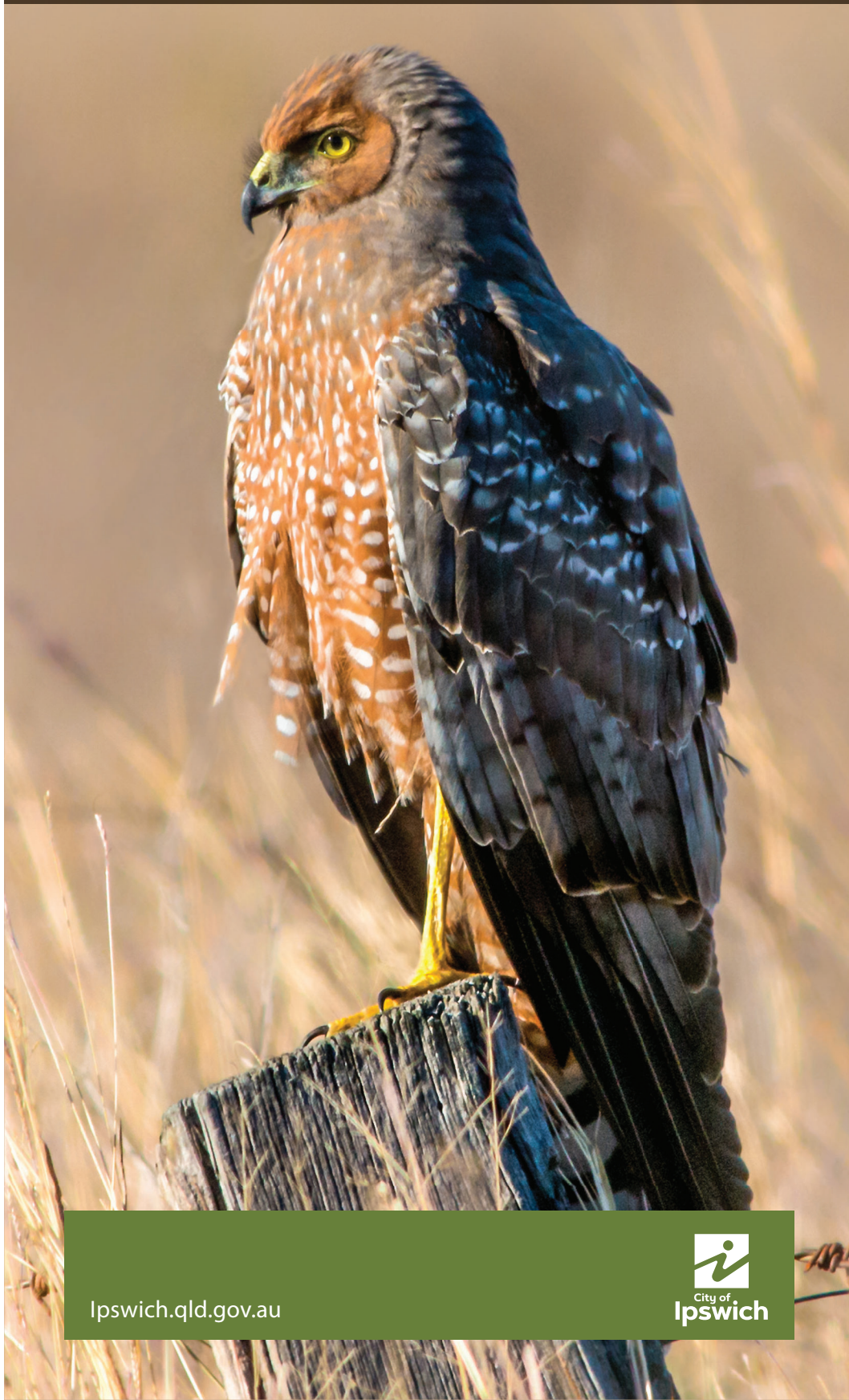


# Landholder Conservation Partnerships Program

Conserving Nature Together





Cover image: Rosewood sentinel by L Hepburn  
This page: Kangaroos by C Truong  
Ipswich Enviroplan Photo Comp

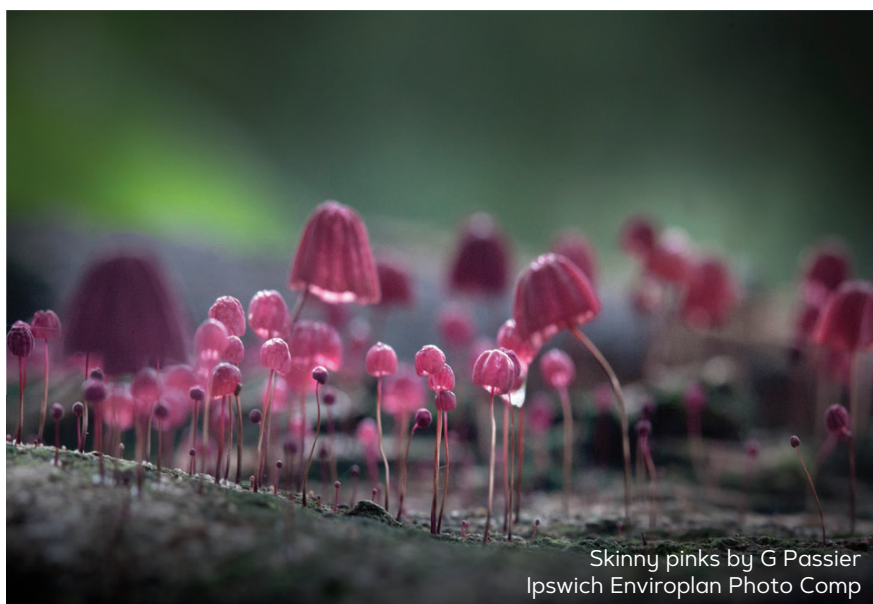
Conservation partnerships on private land are a fundamental and valuable tool in achieving Ipswich City Council's (council) corporate objectives, specifically in regards to caring for the environment. Without such partnering arrangements in place, council is limited to actions on public land and unable to provide coordinated conservation efforts.

The landholder community is a central component to the success of biodiversity conservation in Ipswich. There is a strong social value in achieving conservation stewardship and a connected network of passionate community members.

## Program overview

The Landholder Conservation Partnerships Program (LCPP) aims to encourage and assist Ipswich's landholders to manage, enhance and protect ecosystems in order to conserve flora and fauna on their properties. The LCPP is funded by Ipswich City Council's Enviroplan Levy. Landholders have partnership options that can be either statutory or non-statutory to suit their individual needs.

The LCPP provides ongoing support for private landholders who can demonstrate a commitment to either restoring fragmented landscapes or protecting and maintaining intact areas of vegetation located in priority areas in Ipswich.





Kookaburra silhouette by G Eadie  
Ipswich Enviroplan Photo Comp

## Program objectives

Foster stewardship and environmental advocacy.

Facilitate on ground conservation outcomes and provide a reliable platform for conservation on private land.

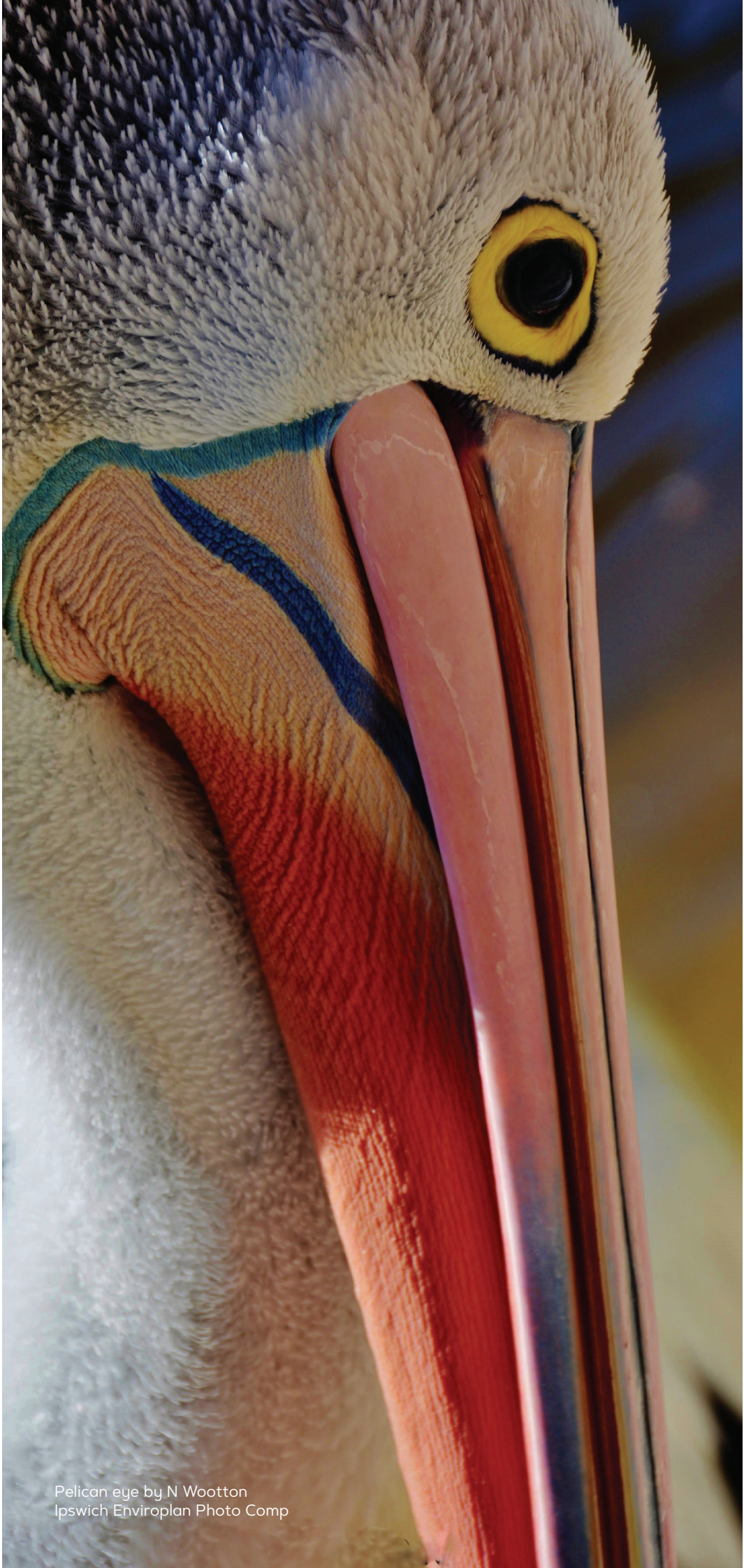
Support and up-skill private landholders through education, provision of resources and knowledge sharing.

Actively engage with landholders in strategic priority areas as defined by the Nature Conservation Strategy and the Waterway Health Strategy.

Engage with internal and external stakeholders to achieve broad environmental outcomes.



Dainty green tree frog by B Duhig  
Ipswich Enviroplan Photo Comp



Pelican eye by N Wootton  
Ipswich Enviroplan Photo Comp

## NON-STATUTORY PARTNERSHIPS



### Land for Wildlife

Committing to protecting (>1ha) of intact vegetation (full registration) or restoring landscapes (working towards) with support from Land for Wildlife South-East Queensland.

---



### Biodiversity Conservation Agreement

Committing to a high level protection mechanism through the Ipswich Planning Scheme zones for intact vegetation.

Properties (>1ha) must be within a particular planning scheme and Nature Conservation Strategy zone.

---



### Corridor Conservation Agreement

Committing to restoring fragmented landscapes or waterway corridors, or maintaining intact vegetation that is not conservation zoned through the Ipswich Planning Scheme.

Properties must be within a particular Nature Conservation Strategy zone.

---



### Habitat Gardens

Committing to improve environmental and sustainable outcomes in backyards.

## STATUTORY PARTNERSHIP



### Voluntary Conservation Covenant

Committing to permanent protection mechanisms through the Land Titles Act in perpetuity for intact vegetation.

Properties (>1ha) must be within a particular planning scheme and Nature Conservation Strategy zone.

## Program incentives

- Nature Conservation Grants
- Land Management Payments
- a variety of resources to help support, encourage and educate landholders
- free plants
- workshops and events
- technical support and advice.

### **NATURE CONSERVATION GRANTS**

This program aims to support tangible conservation outcomes on private land. Eligible landholders can apply for grant funding to undertake on-ground activities to rehabilitate degraded landscapes, protect and improve habitat and biodiversity, and improve the climate resilience of Ipswich's natural environment.

### **LAND MANAGEMENT PAYMENTS**

These payments are an annual incentive for Voluntary Conservation Covenants and aim to support conservation outcomes that achieve the overall program objectives and actions defined in the associated Property Management Plan.





## Annual reporting

Annual reporting is required for landholders who receive council incentives.

Council incentives include;

- Nature Conservation Grants
- Land Management Payments and
- various resources distributed to landholders for support, encouragement and education.

Habitat Gardens partners are required to submit a report at the end of their five (5) year agreement term.

Information provided in annual reports is used to measure the success of distributed funding, incentives and the overall program.





Koala by R Connell  
Ipswich Enviroplan Photo Comp

## Property Management Plan

Property Management Plans (PMPs) are developed for every property registered in the program, except Habitat Gardens properties. PMPs are a tool aimed at supporting sustainable land management which considers the personal goals of landholders, environmental issues and economic considerations. PMPs are mandatory for Voluntary Conservation Agreement, Voluntary Conservation Covenant and Land for Wildlife partners and have a five (5) year term. Grants, free plant applications and other distributed funding are directly linked to projects documented in PMPs.

## Frequently asked questions

**Q:** Will I be able to sell my property in the future without any potential implications?

**A:** Yes, the Voluntary Conservation Agreements and Land for Wildlife partnerships automatically terminate at the point of any property sale and are not legally binding. The Voluntary Conservation Covenant is permanently registered to your property title, however does not impede your decision to sell.

**Q:** Can I still run livestock on my property while being a partner in the Landholder Conservation Partnerships Program?

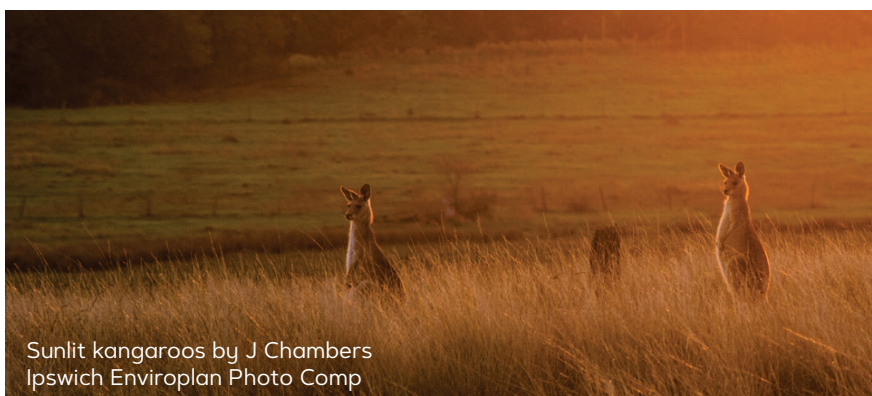
**A:** Yes, Voluntary Conservation Agreements, Land for Wildlife and Covenants can cover part or all of your property. The boundary of your agreement area is negotiated between you and your Program Officer and a property plan will include management approaches such as exclusion zones.

**Q:** Does the agreement give council access to my property?

**A:** No, council officers cannot access your property without your permission.

**Q:** How much of my property should be under an agreement?

**A:** There are minimum standards, depending on the agreement, however the agreement boundary is negotiated between you and your Program Officer.






Ipswich City Council  
PO Box 191, Ipswich QLD 4305,  
Australia


Phone (07) 3810 6666  
council@ipswich.qld.gov.au  
ipswich.qld.gov.au

---

**Join us online:**

 /IpswichCityCouncil

 /IpswichCouncil

 /ipswich-city-council

 /IpswichCityCouncilTV

